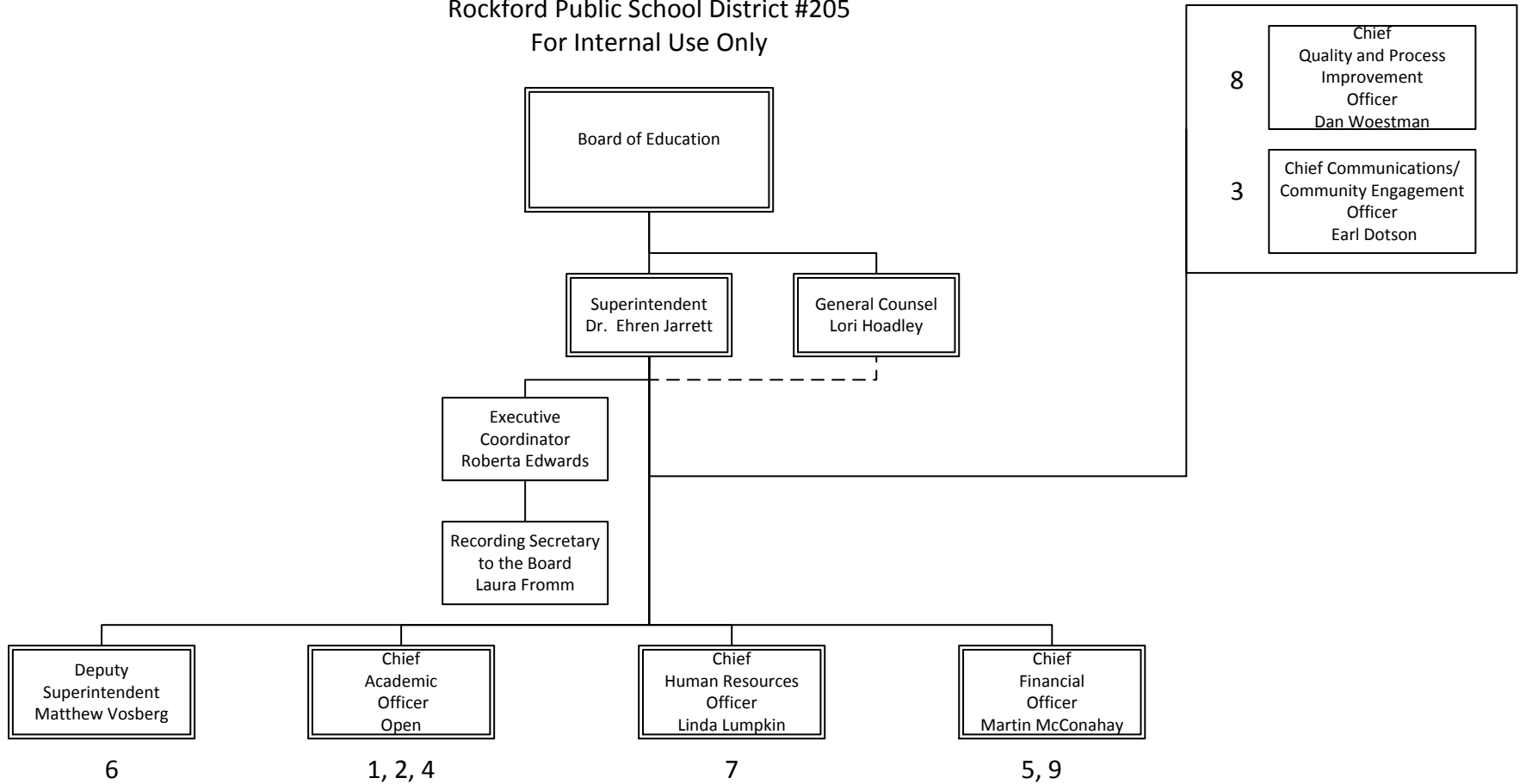


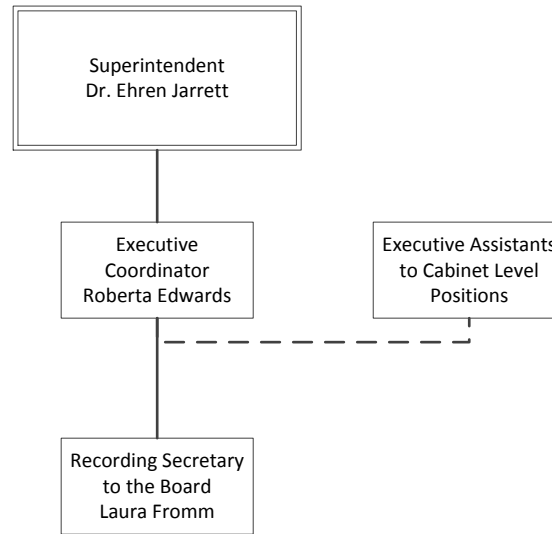
Rockford Public School District #205
For Internal Use Only



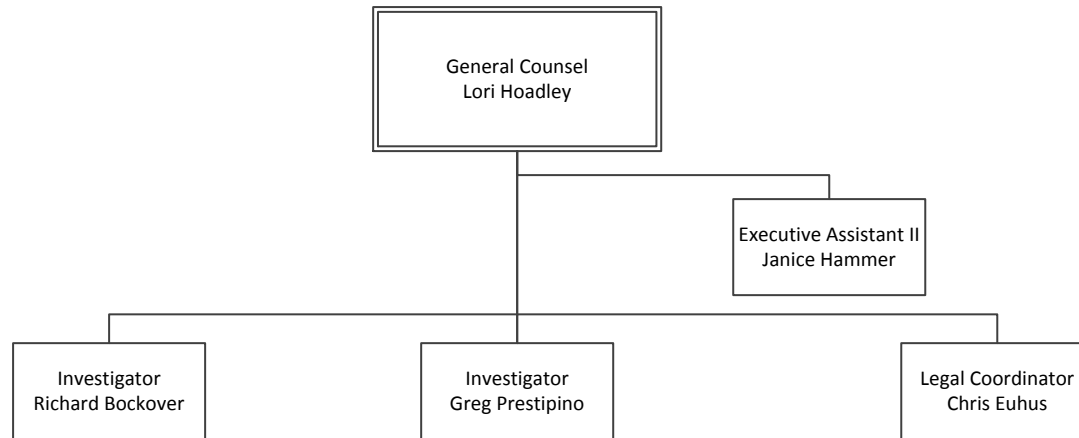
Strategy Legend:

- 1. Curriculum Alignment
- 2. Differentiated Instruction
- 3. Customer Service
- 4. Social Emotional Health & Skills
- 5. Facilities & Technology
- 6. Internal Trust & Relationships
- 7. Recruit & Develop
- 8. Monitor, Track & Report
- 9. Resource Allocation

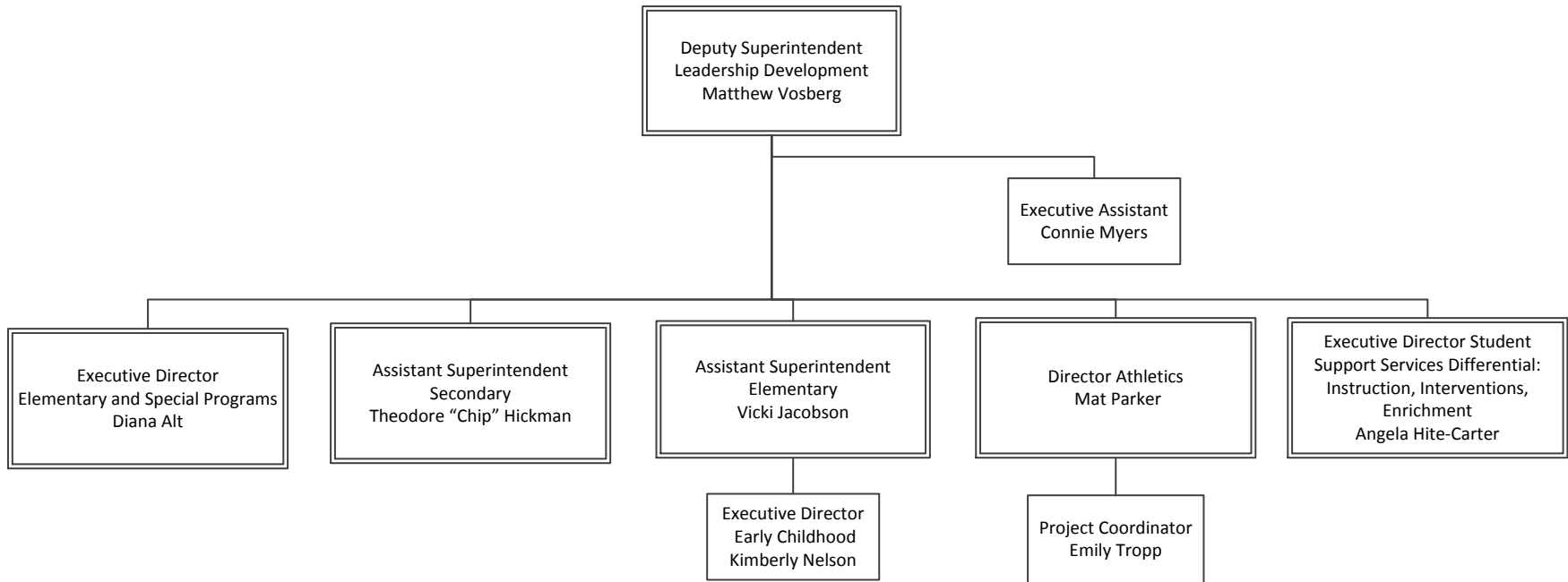
Rockford Public School District #205
For Internal Use Only



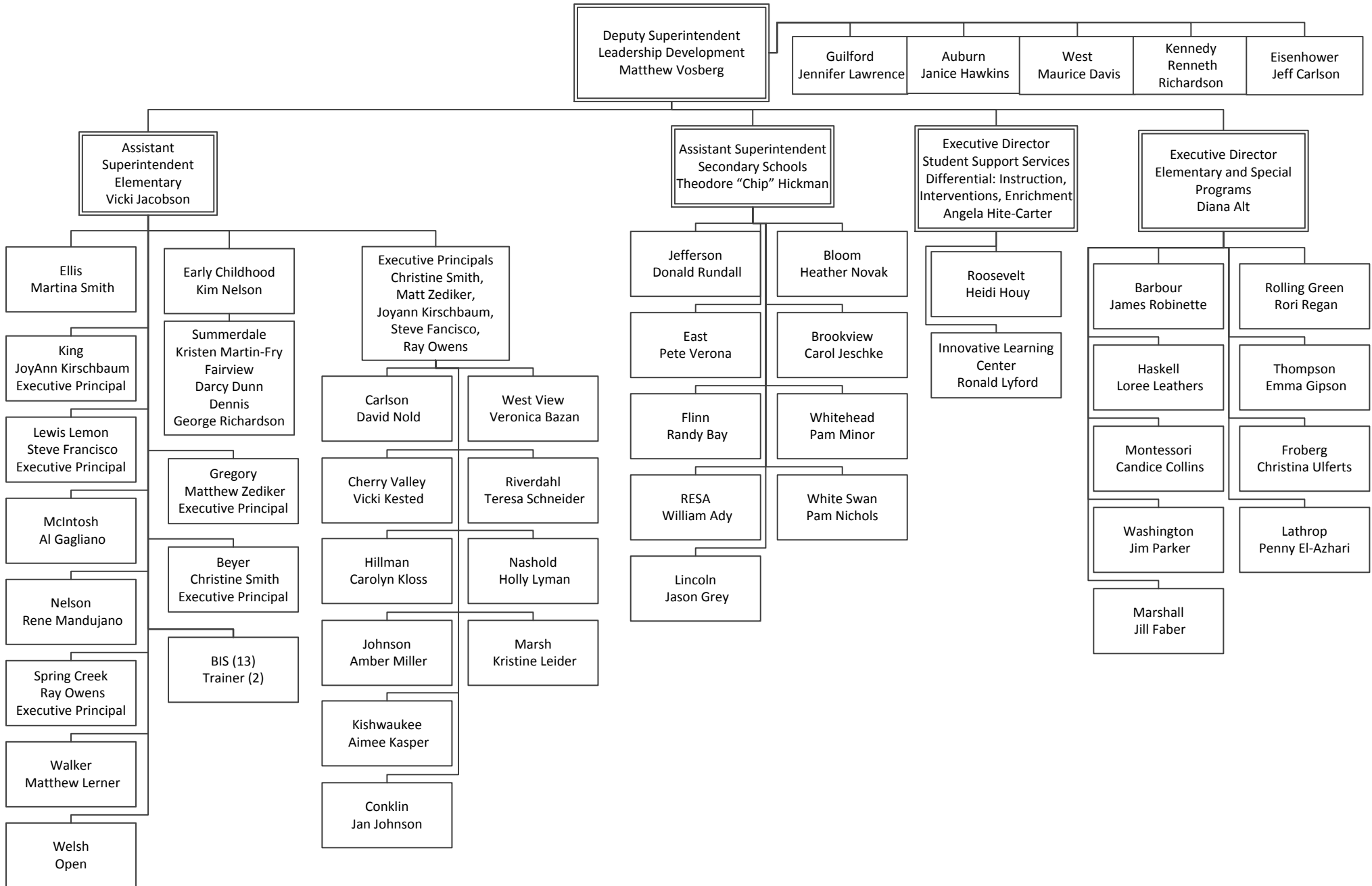
Rockford Public School District #205
For Internal Use Only



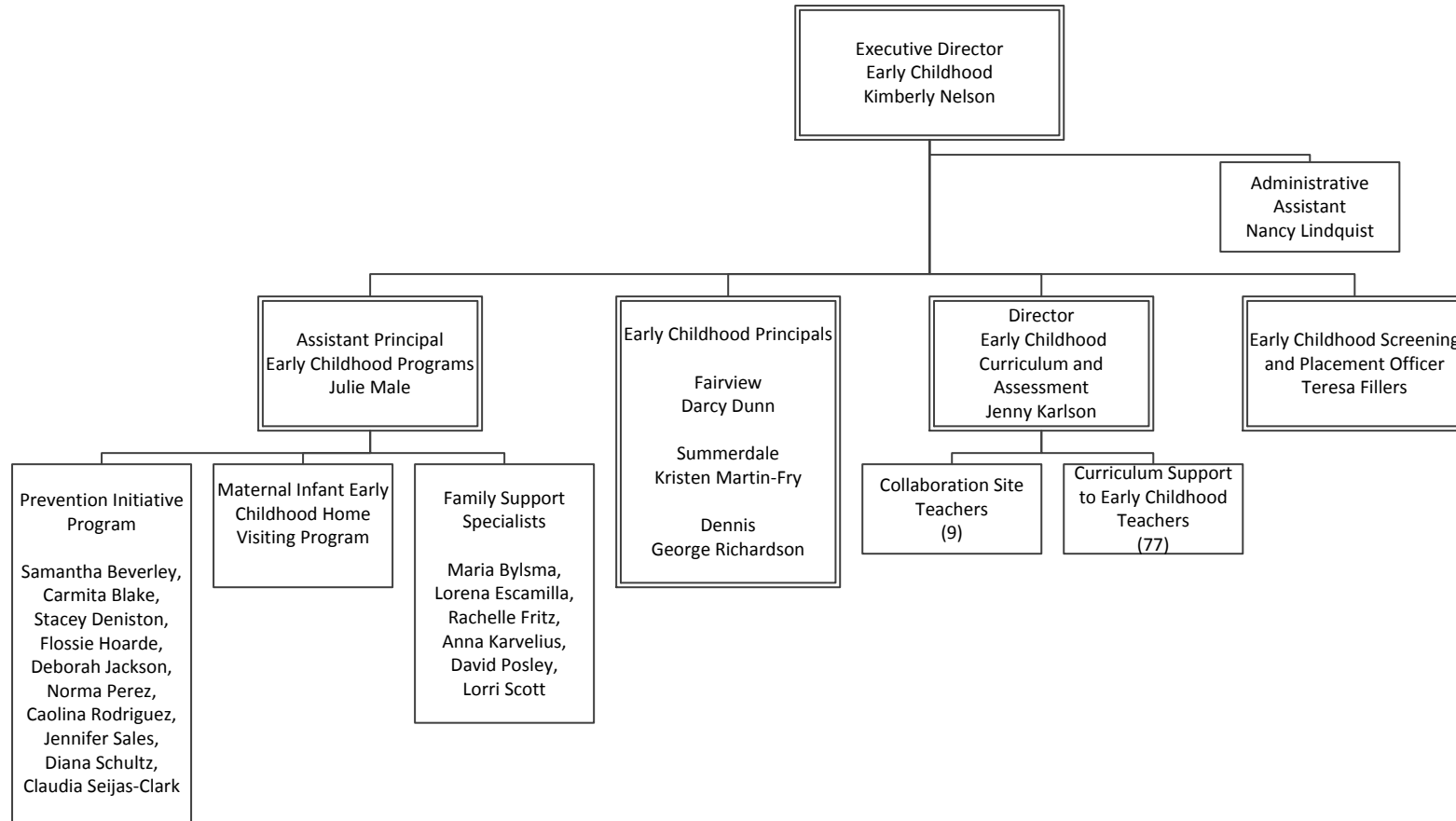
Rockford Public School District #205
For Internal Use Only



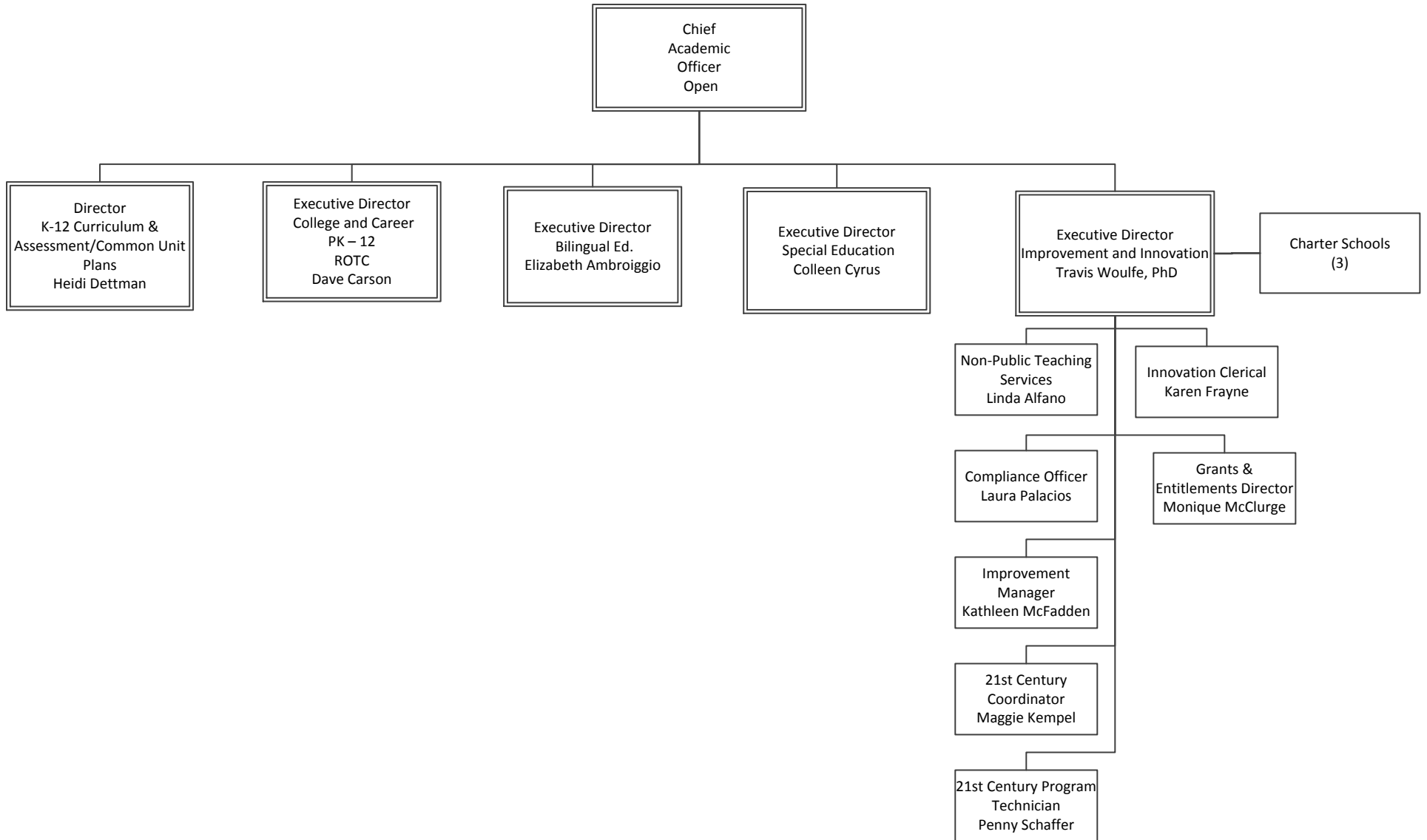
Rockford Public School District #205
For Internal Use Only



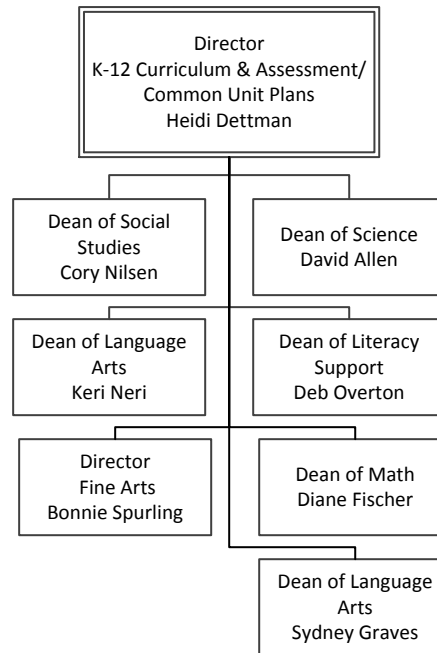
Rockford Public School District #205
For Internal Use Only



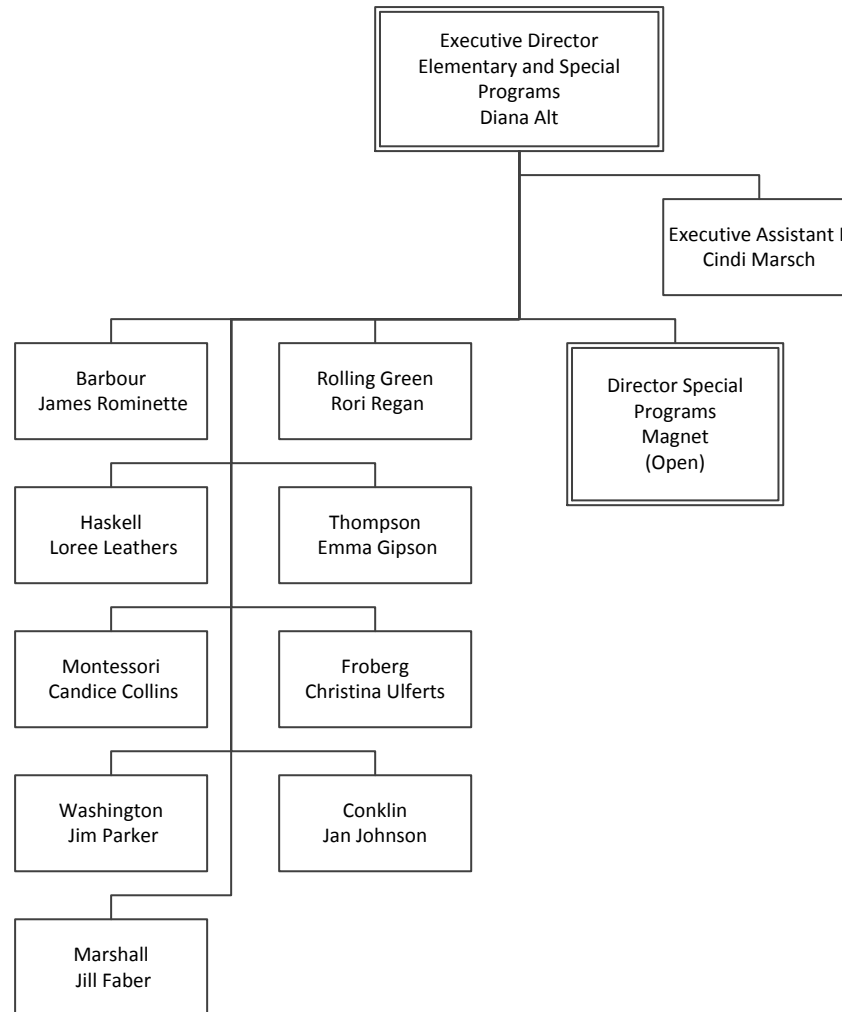
Rockford Public School District #205
For Internal Use Only



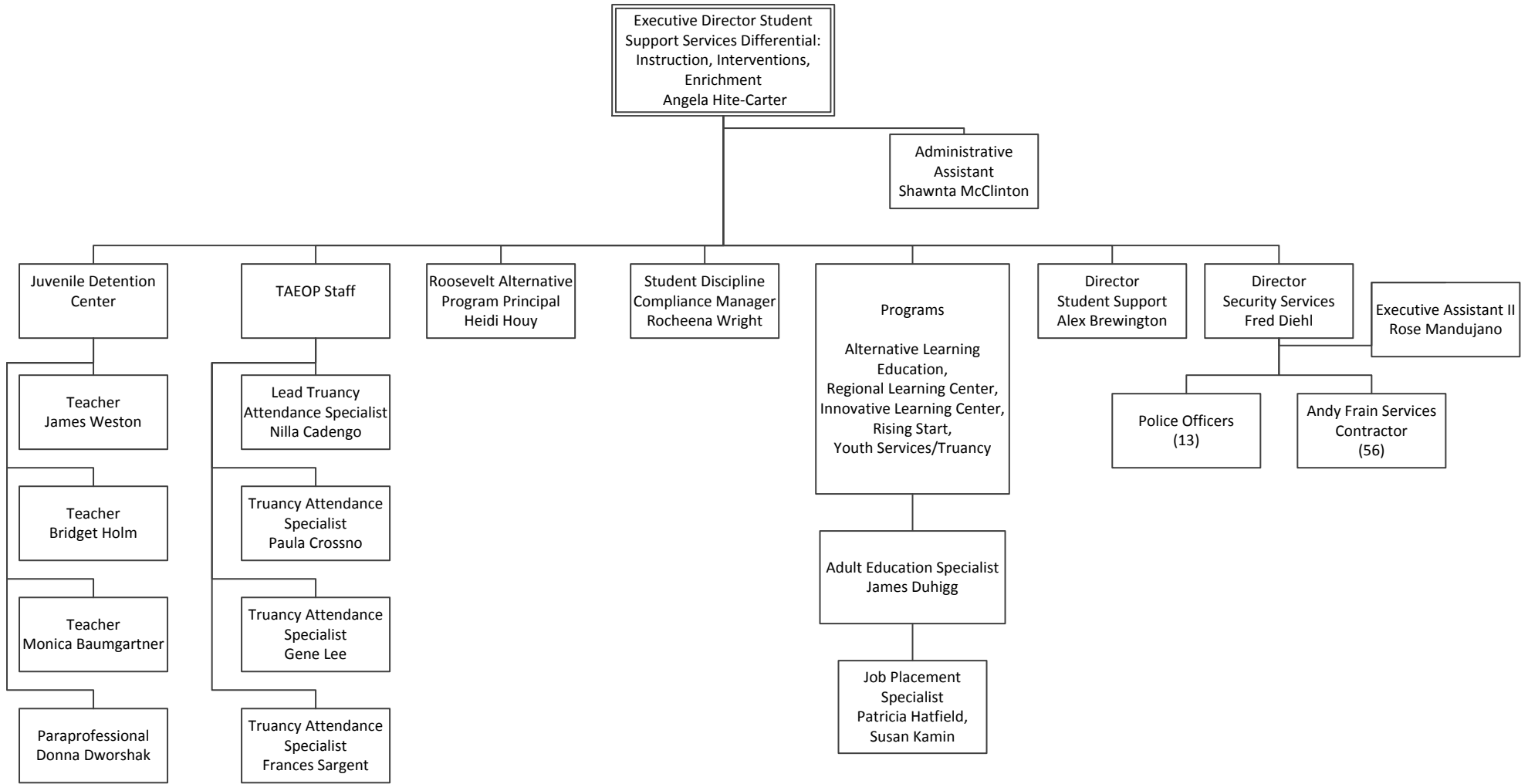
Rockford Public School District #205
For Internal Use Only



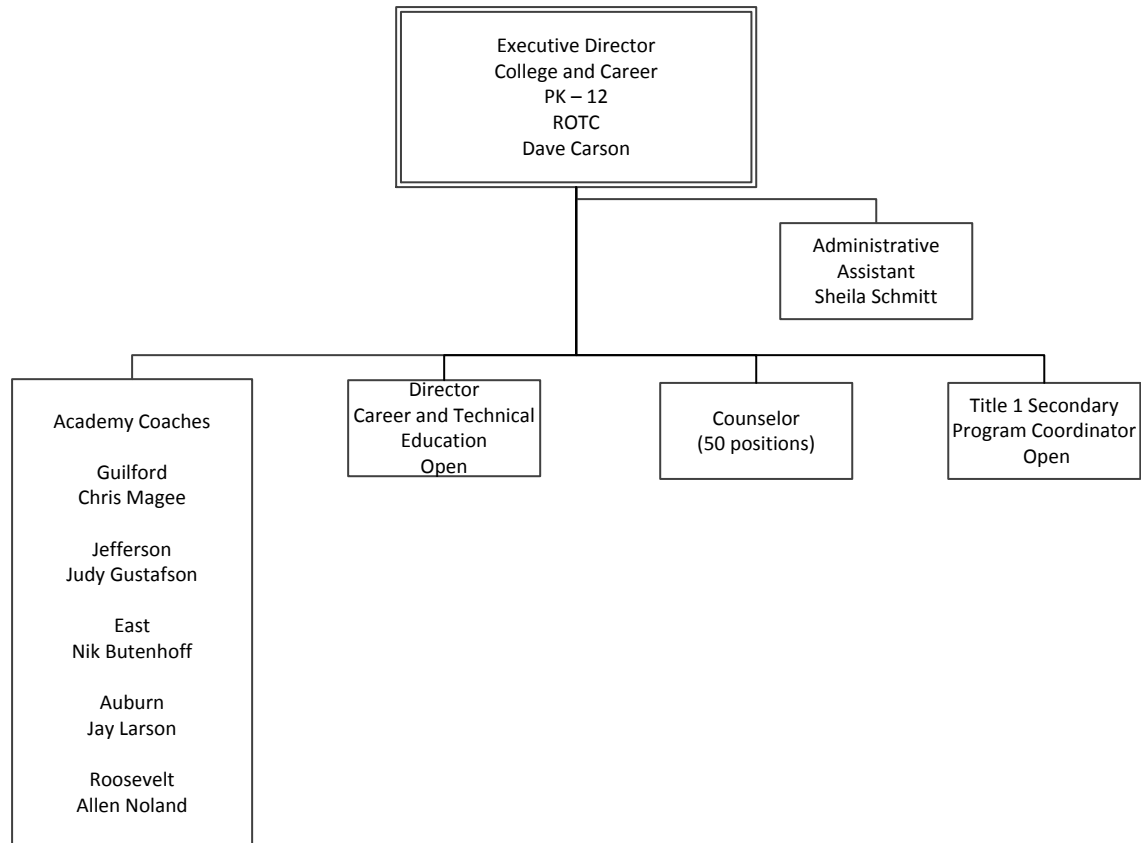
Rockford Public School District #205
For Internal Use Only



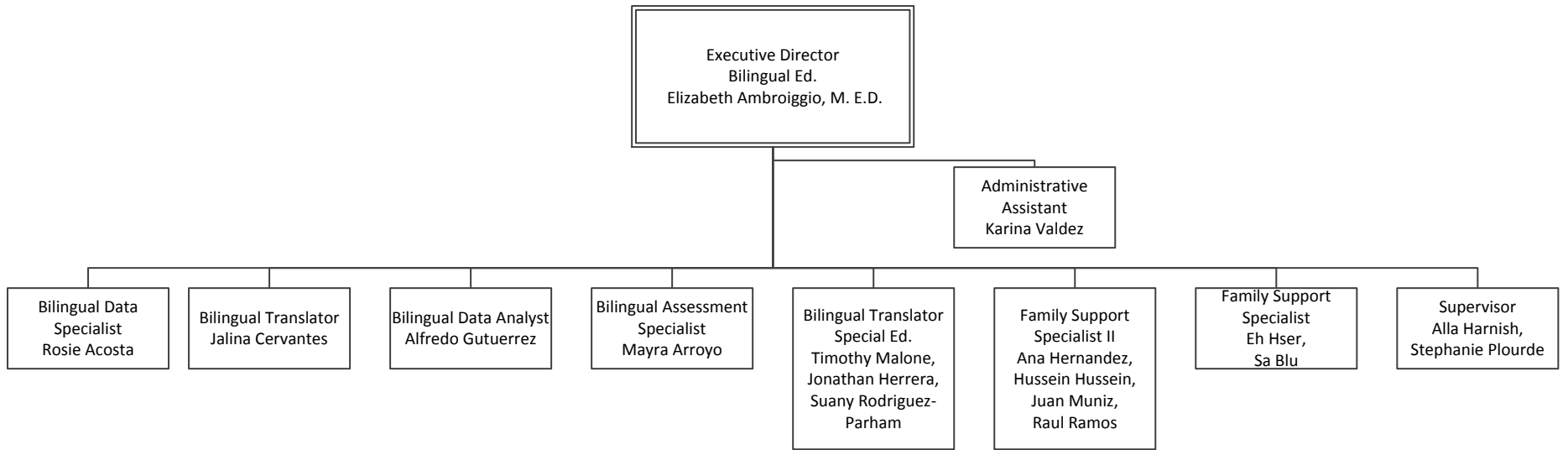
Rockford Public School District #205
For Internal Use Only



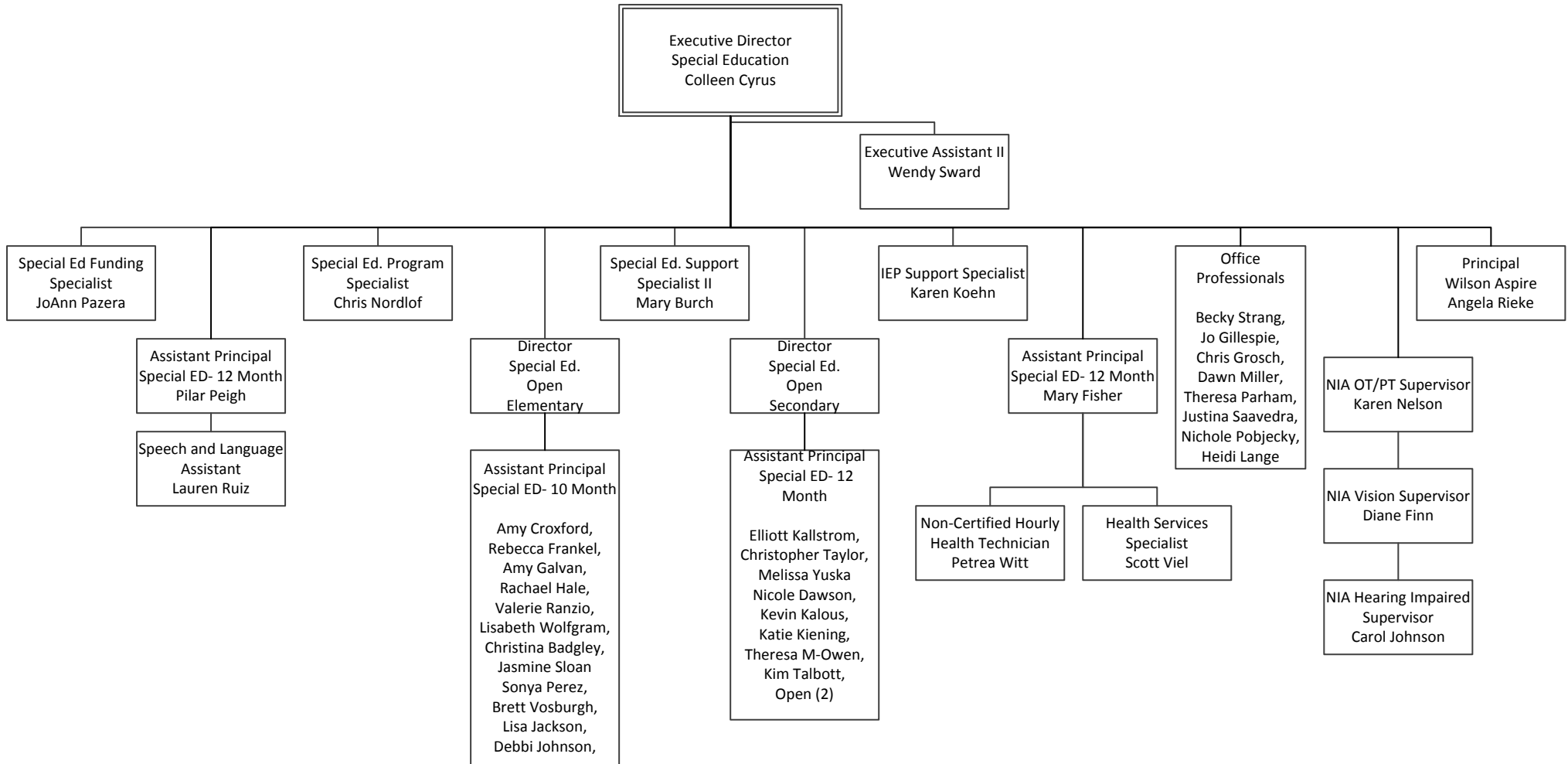
Rockford Public School District #205
For Internal Use Only



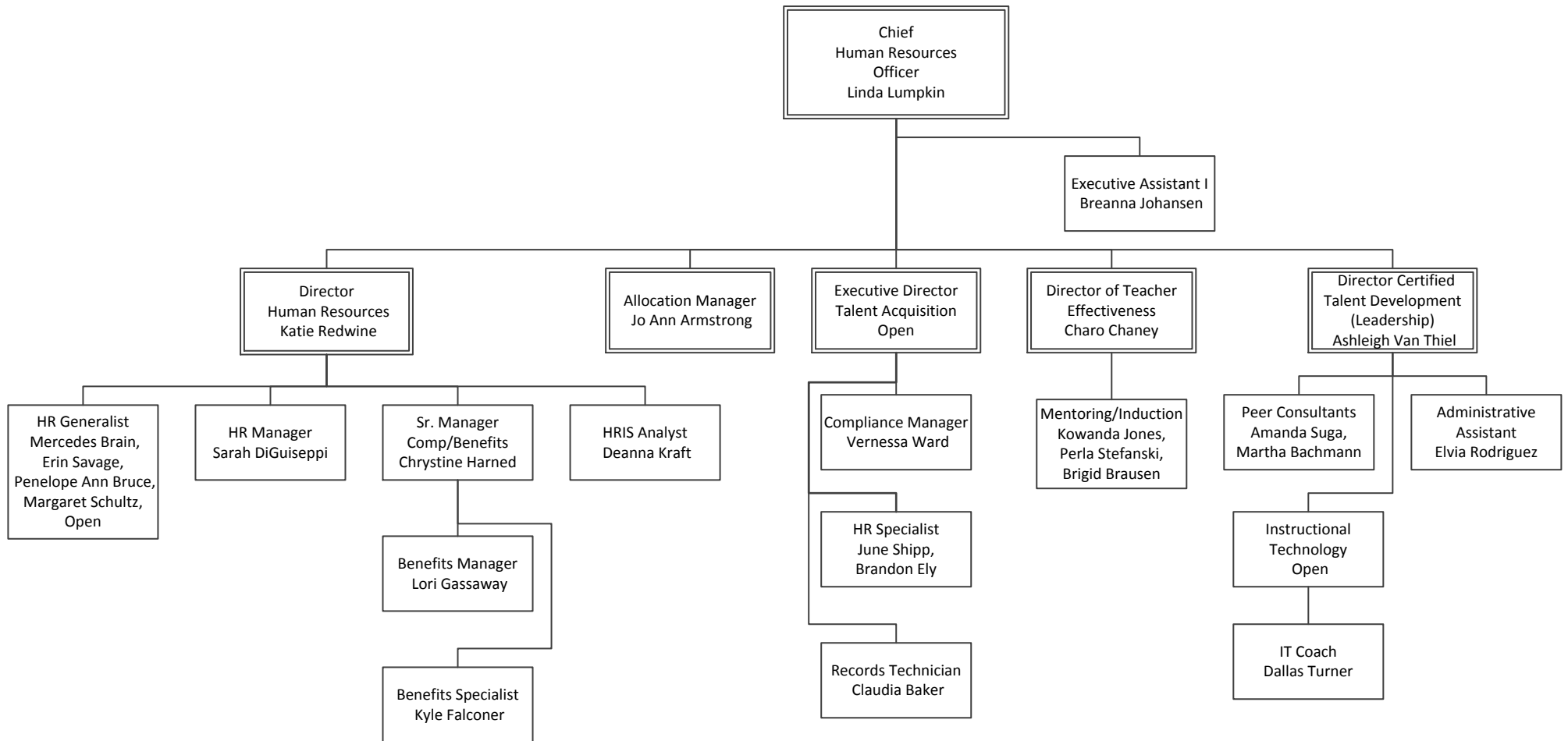
Rockford Public School District #205
For Internal Use Only



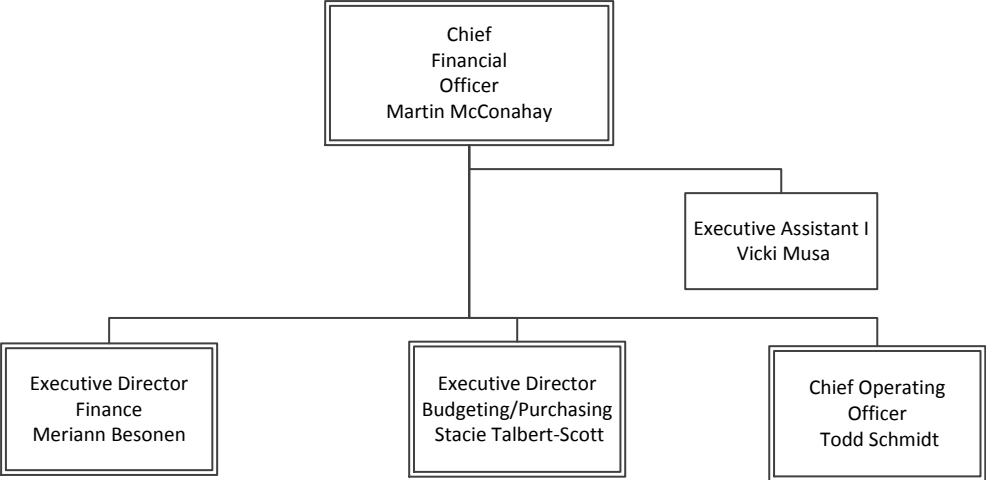
Rockford Public School District #205
For Internal Use Only



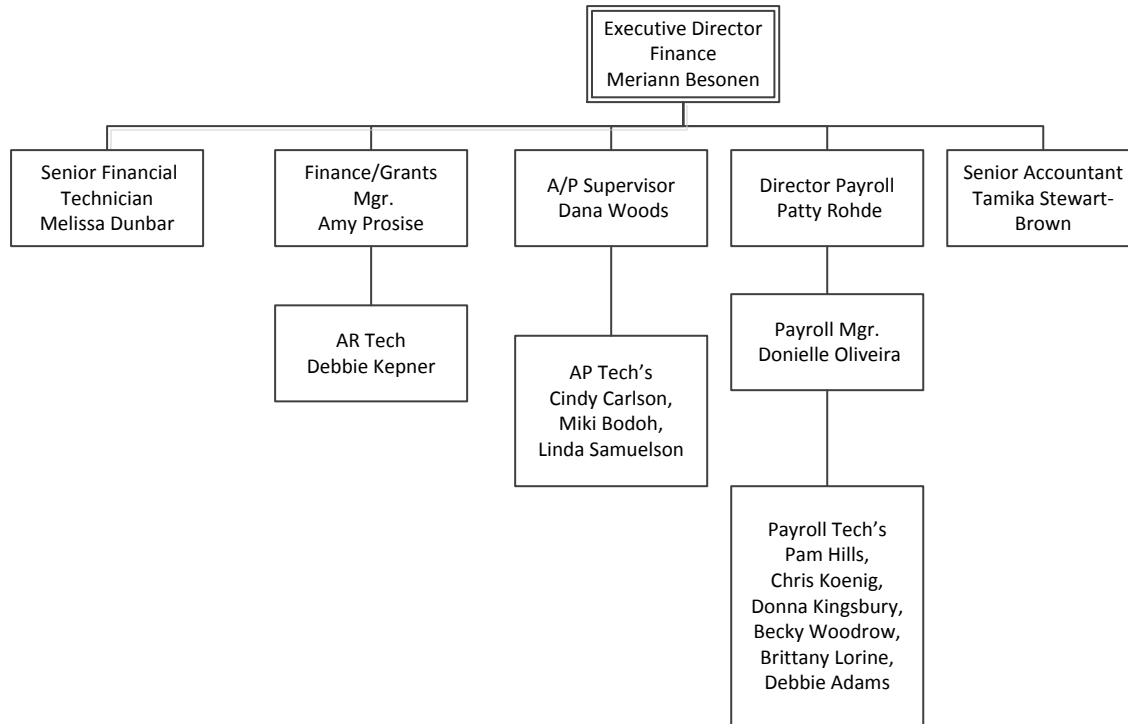
Rockford Public School District #205
For Internal Use Only



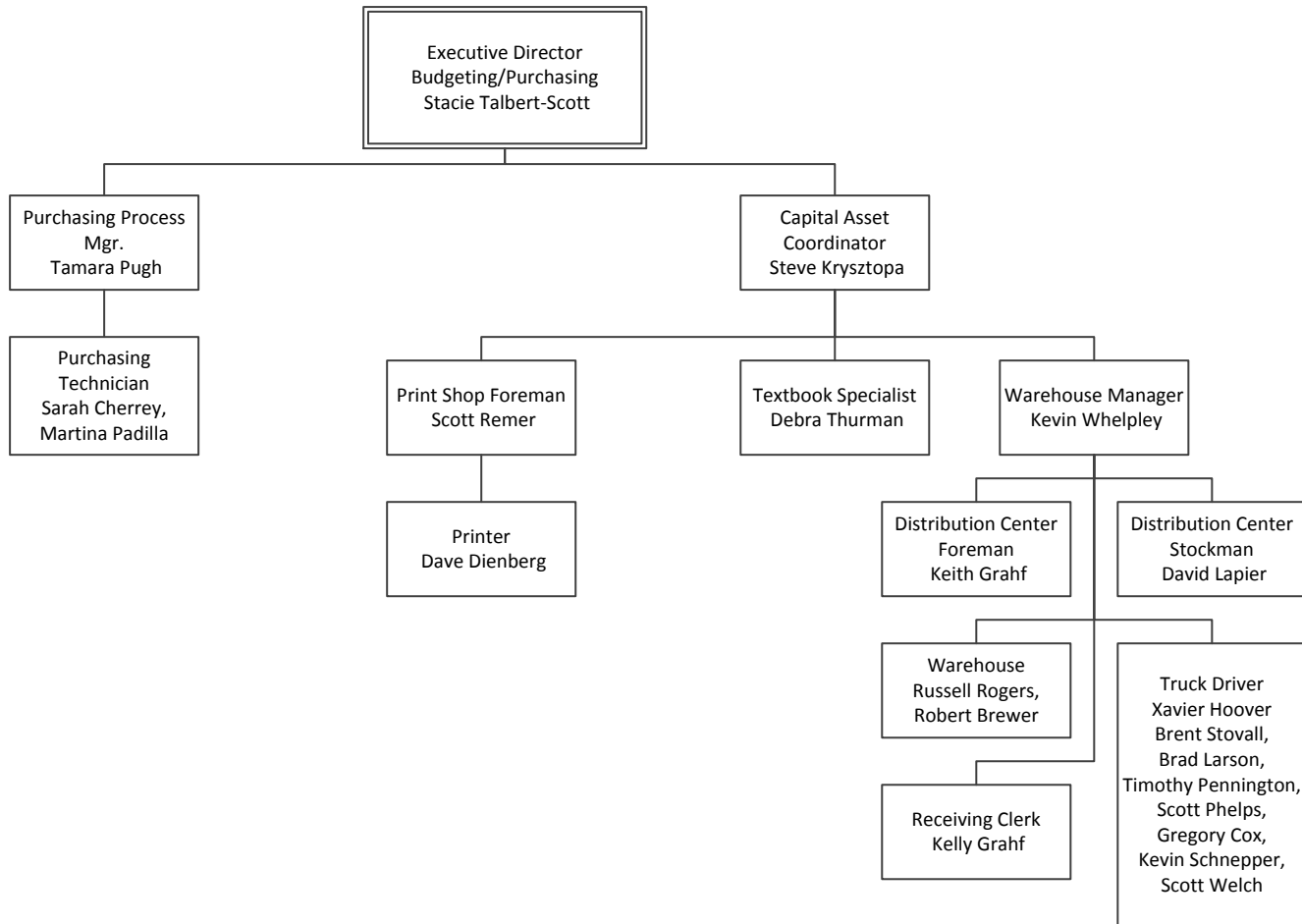
Rockford Public School District #205
For Internal Use Only



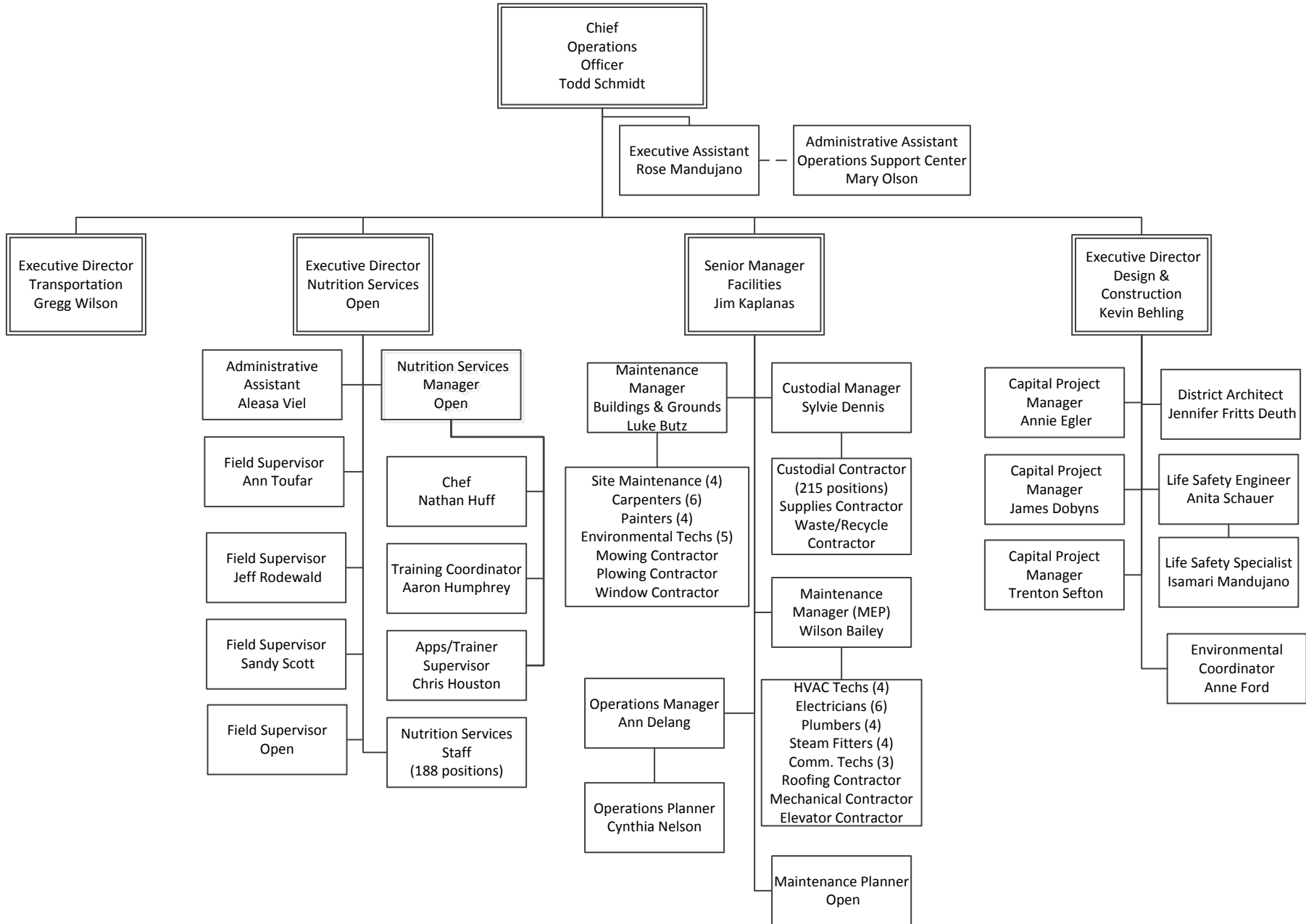
Rockford Public School District #205
For Internal Use Only



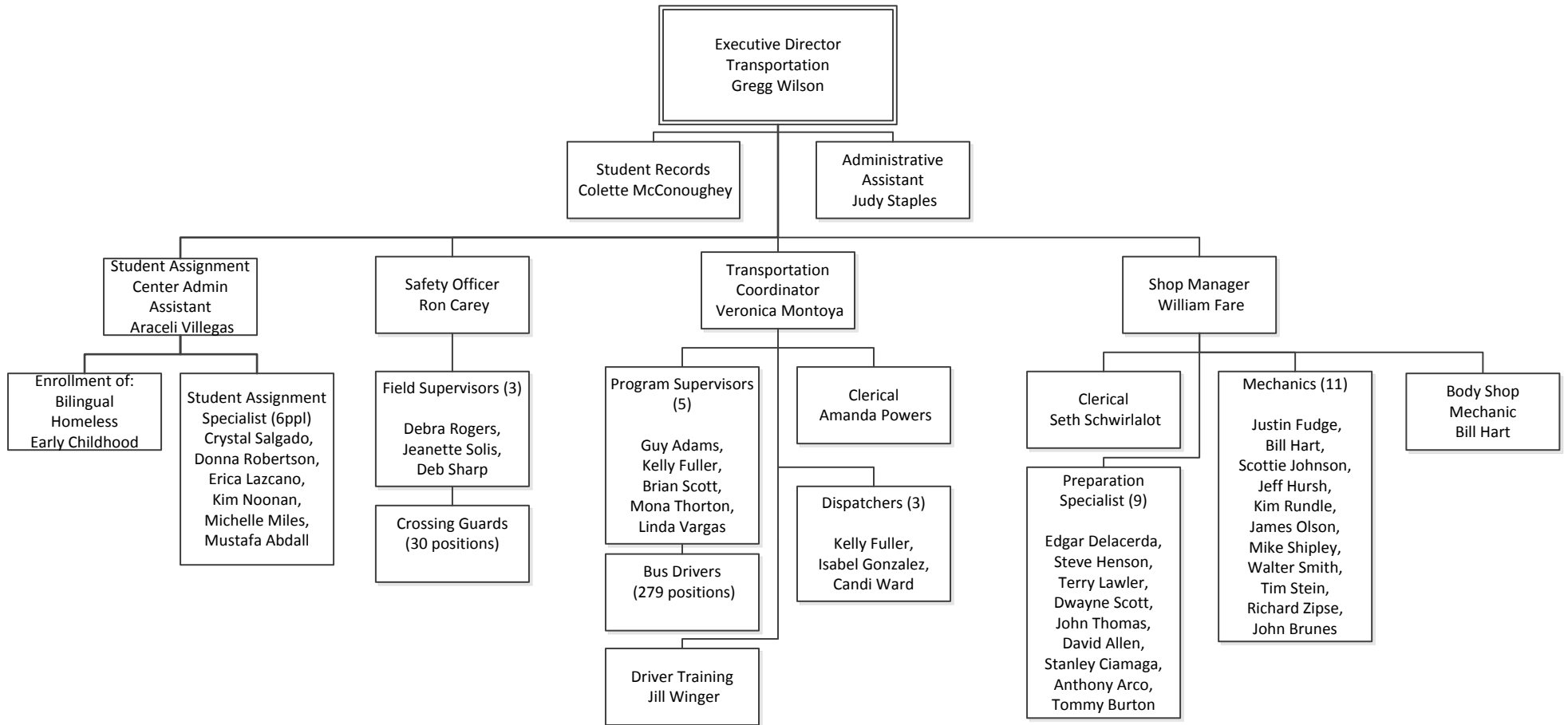
Rockford Public School District #205
For Internal Use Only



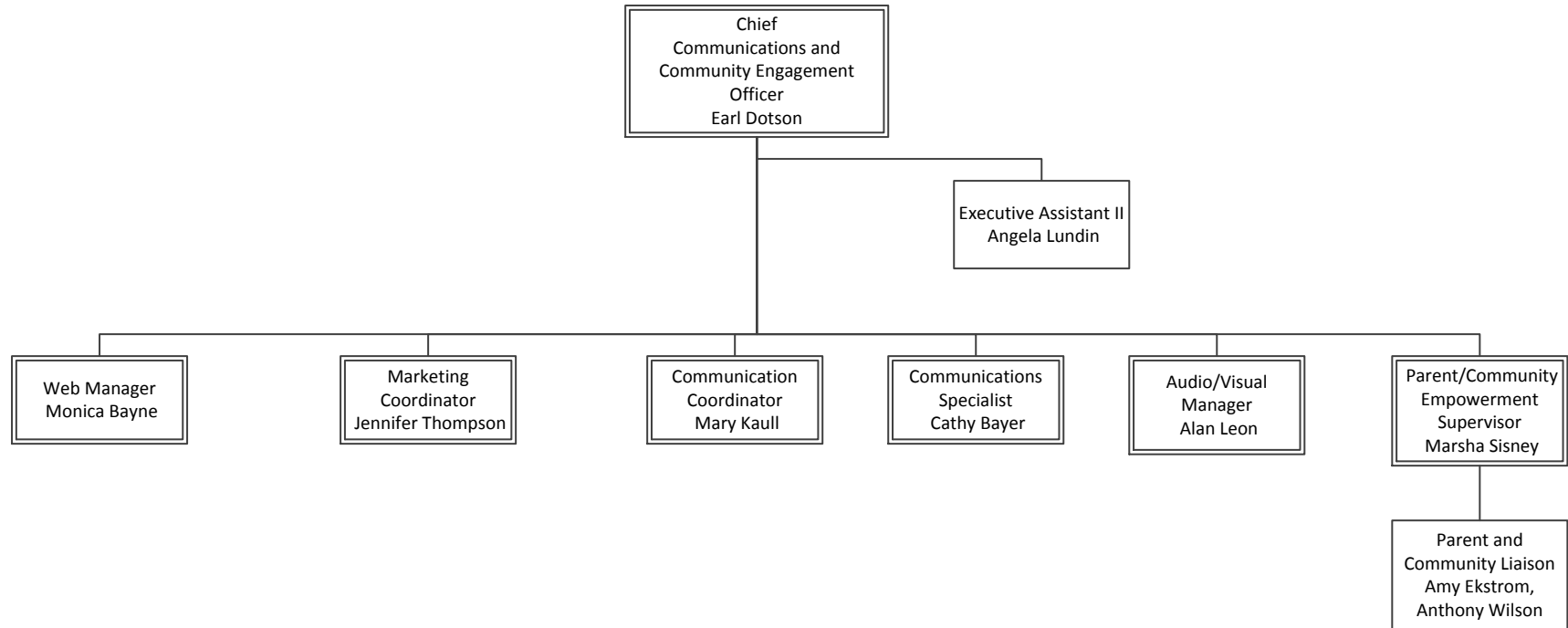
Rockford Public School District #205
For Internal Use Only



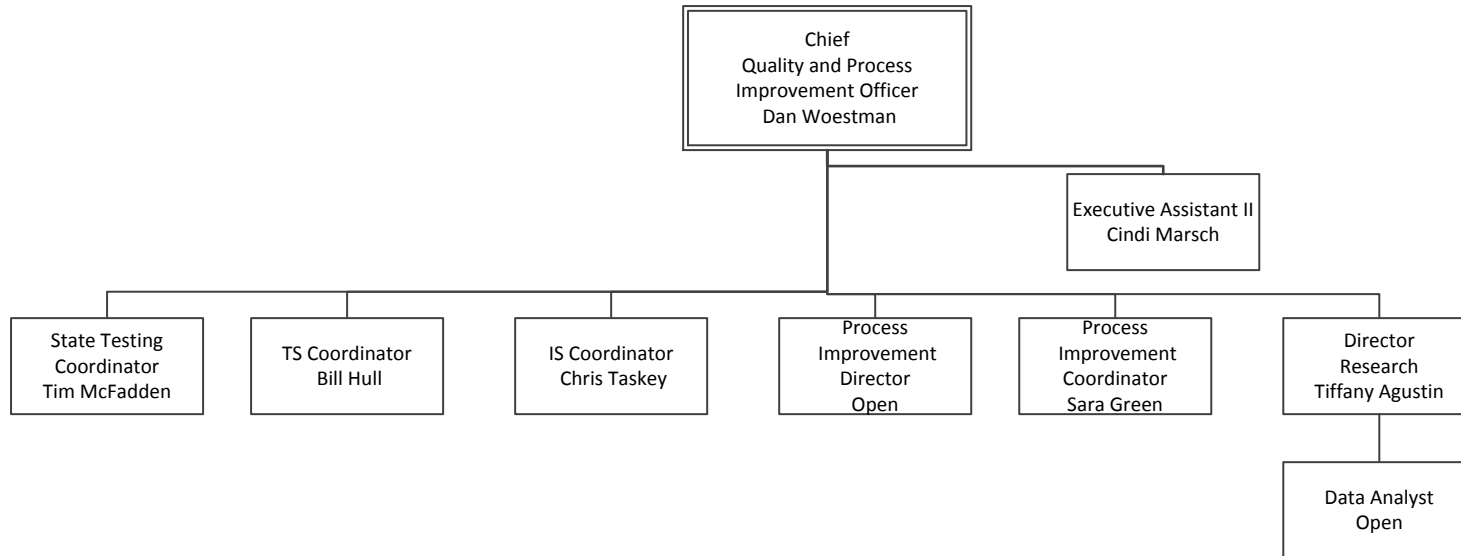
Rockford Public School District #205
For Internal Use Only



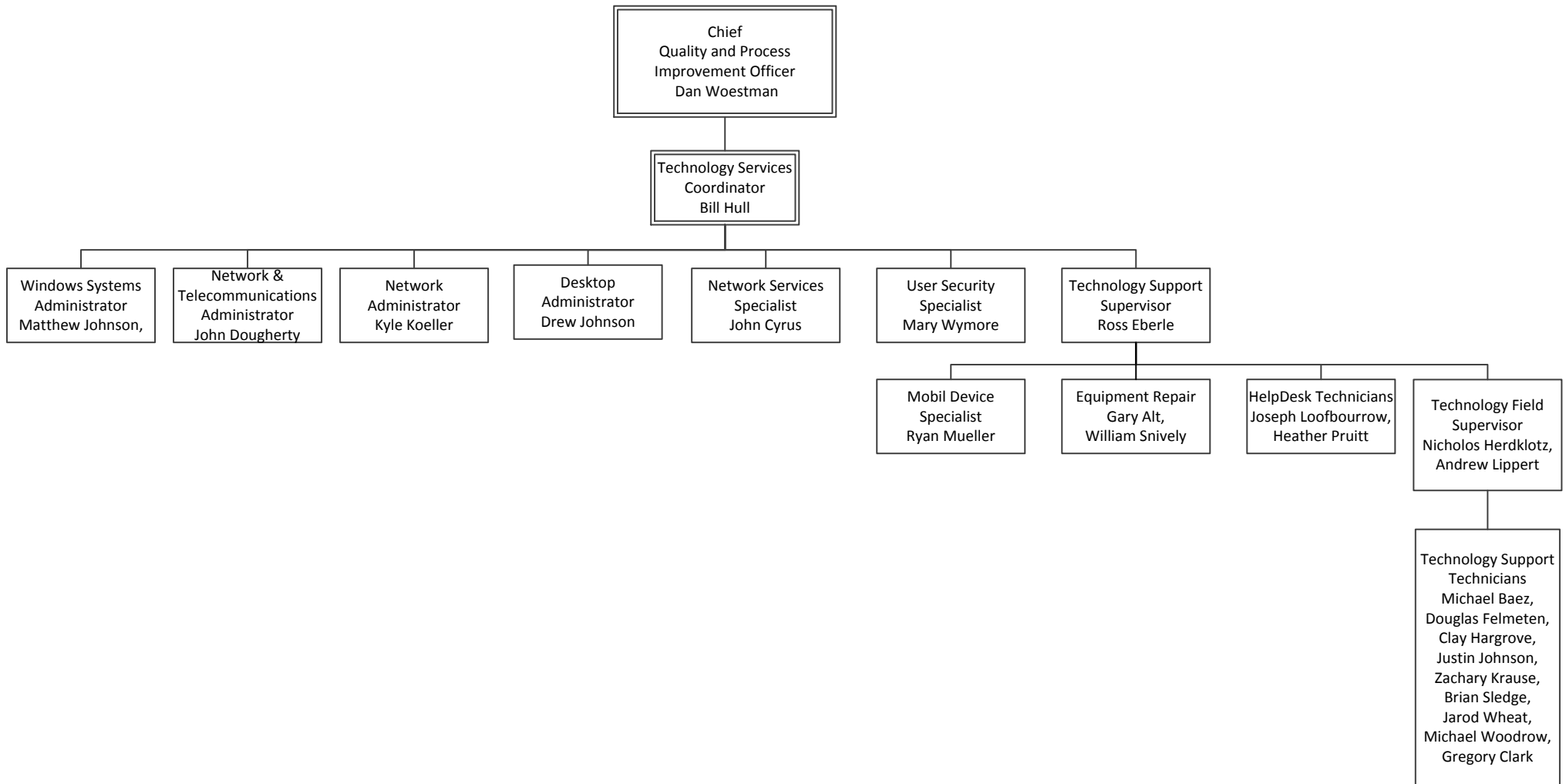
Rockford Public School District #205
For Internal Use Only



Rockford Public School District #205
For Internal Use Only



Rockford Public School District #205
For Internal Use Only



Rockford Public School District #205
For Internal Use Only

